

Wiring Guide to

SOLAR & ELECTRIC

DOUBLE GATE

OPENER

FAILURE TO FOLLOW THESE INSTRUCTIONS MAY
VOID YOUR WARRANTY



**Automatic
Gate System**

Contents

WIRING GUIDE TO ELECTRIC & SOLAR DOUBLE GATE OPENER

CONTENTS

SOLAR SYSTEM

Step 1 mounting control box	3
Step 2 prepare regulator on Z bracket	3
Step 3 connect motor wires	4
Step 4 mount Z bracket for regulator	4
Step 5 mount regulator	5
Step 6 connect regulator to control board	5
Step 7 secure battery	6
Step 8 power up the control board	6
Step 9 connect solar cable to regulator	7
Pointers & securing control box lid	8

ELECTRIC SYSTEM

Step 1 mounting control box	9
Step 2 connect motor wires	10
Step 3 connect transformer to control board.....	11
Step 4 secure optional backup battery	12
Pointers & securing control box lid	17

OTHER ACCESSORY WIRING

Standard push button wiring	14
Key push button wiring	15
7 Channel Long range receiver wiring	16

Tip: Green connector blocks on the main control board can be removed to help with wiring in cables

Double Solar Wiring

Solar Gate Opener Wiring

Step 1

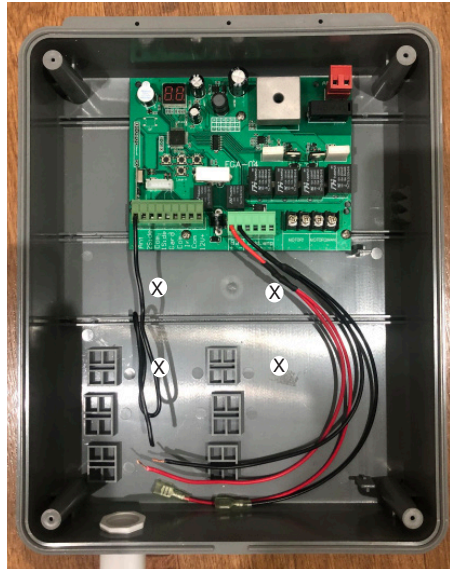
Mounting the control box

Install the control box at a suitable location, no further than 1mtr from the master gate.

Use the pre-marked anchor points in the box to secure.

Highly recommend to silicone around these screws to prevent any water seeping into the control box and also preventing insect infestation.

Do not drill holes above the computer board as this will allow water in and damage the board.



Step 2

Prepare Regulator on Z Bracket

Prepare the regulator by mounting the Z Bracket at the screw hole located near the battery indicator lights with the bolt and nut provided.

Note: regulators may differ slightly in appearance to below photos



Double Solar Wiring

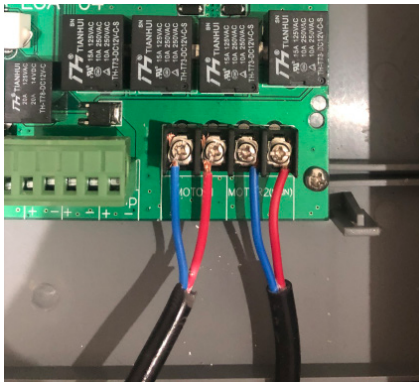
Step 3

Connect Motor Wires

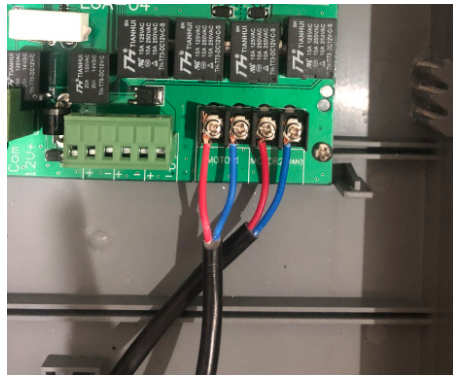
Connect the Motor cables to MOTOR1 and MOTOR2 (MAIN) on to the EGA board. MOTOR2 should be the arm closest to the control box and MOTOR1 should be the slave arm furthest away from the control box.

Ensure no motor wires are visible once screwed into the terminals to prevent any short circuiting from them touching.

Note: In the conduit, you should also have 1 wire to the solar panel ready. If the hard wired push button or keypad is to be connected, this wire should also be available



Gate Direction
Pull to open
Blue (left) - Red (right)

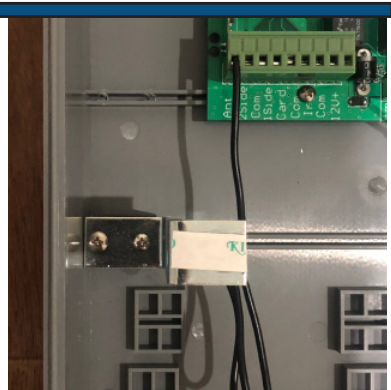


Gate Direction
Push to open
Red (left) - Blue (right)

Step 4

Mounting the Z Bracket

Mount 1 Z Bracket onto the ledge in the control panel box as shown

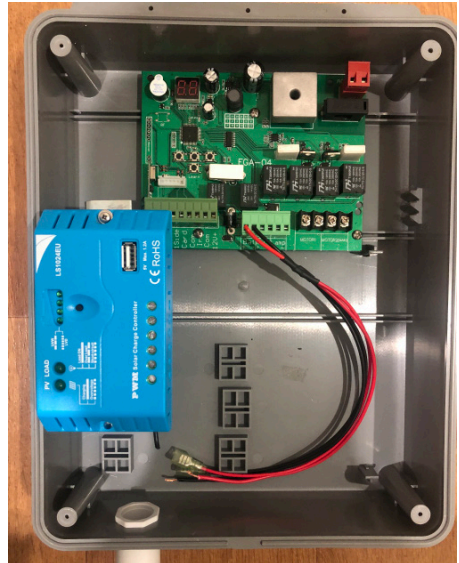


Double Solar Wiring

Step 5

Mounting the Regulator

Mount the regulator onto the second ledge in the control box as shown.

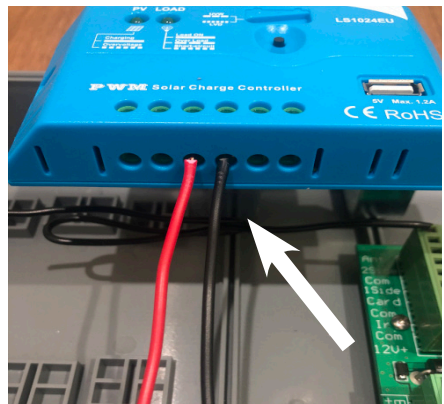
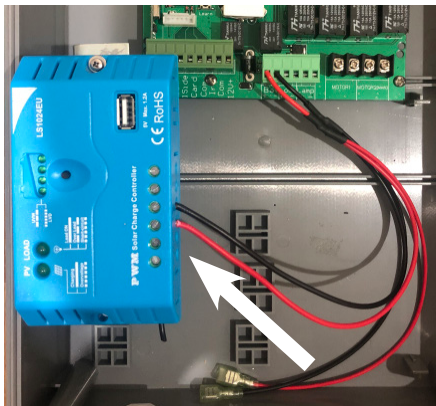


Step 6

Connect the red and black cable from the EGA control board to the battery terminals of the regulator

Making sure red is to + and black is to -

Do NOT connect the cable from the solar panel yet

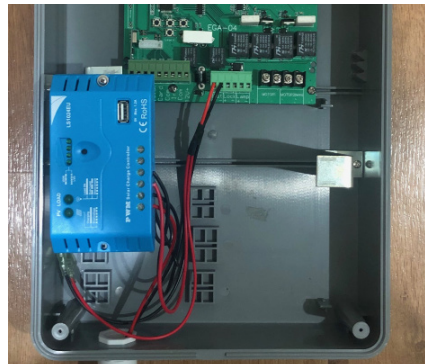


Double Solar Wiring

Step 7

Secure the 12 volt battery with the large Z bracket and screws provided

Caution: Do not drop the battery



Step 8

Power up the EGA control board

Connect the battery cables from the EGA control board to the 12v battery.

Ensure that the red cable is connected to the red terminal and the black cable to the black terminal

Caution: Observe Polarity.
Wrongly installed polarity will damage the board



Double Solar Wiring

Step 9.

Connect the positive and negative cable from the solar panel to the solar regulator terminals as shown in the photo below

Depending on your colour of your solar panel cables:
(red + | brown + | black - | blue -)

Caution:

Observe Polarity.

Wrongly installed polarity will damage the regulator.



Best Solar Panel Angle for all year round

- * Brisbane 38 °
- * Sydney 45 °
- * Melbourne 50 °
- * Tasmania 56 °
- * Adelaide 48 °
- * Darwin 14 °
- * Perth 43 °
- * 0 ° being flat and 90 ° being vertical - panel must face FULL NORTH

View page 34 in your Installation & User Manual for the correct setup of your solar panel when installing

IMPORTANT:

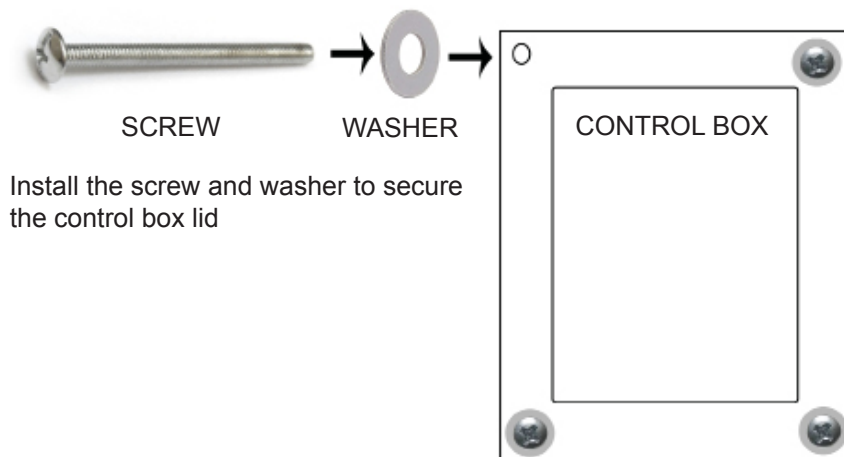
At this point with your actuator arms connected and your battery and solar panel powering the control board, your next step will be running the “Auto Travel Function” which you will find details on in your Installation & User Manual on page 37

SCAN ME - to watch
the video ‘teaching the
travel function’



Double Solar Wiring

Attaching your control box lid using the screws provided



Install the screw and washer to secure the control box lid

Check that the autogate system is operational before closing up the control box.

Auto close will not be active.

Please see main user manual and set auto close after installation is complete.

Recommendations & notes:

1. Ensure that the mounting points on the control box are properly sealed to prevent water and insects from getting in.
3. Silicone off the conduit hole to prevent insects from getting into the control box via the wire conduits.
4. For solar we highly recommend to charge your battery every 6 - 12 months for 2 hours only on a 12v battery charger to prolong the life of your battery.
5. Additional accessories connected to BMG's swing motors may reduce the batteries performance e.g battery life and/or battery standby capacity during unfavourable conditions.
6. We recommend every 6-12 months to do a thorough check over the complete unit and it's internals to make sure there is no insect infestation and that everything is still in good working order.

Double Electric Wiring

Electric Gate Opener Wiring

Step 1

Mounting the control box

Install the control box at a suitable location, no further than 1mtr from the master gate.

Use the pre-marked anchor points in the box to secure.

Highly recommend to silicone around these screws to prevent any water seeping into the control box and also preventing insect infestation.

Do not drill holes above the computer board as this will allow water in and damage the board.



Tip: Green connector blocks and brown connector block on the main control board can be removed to help with wiring in cables

Double Electric Wiring

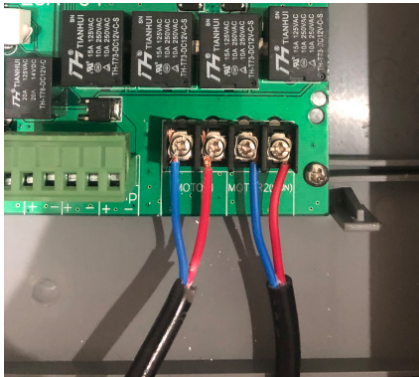
Step 2

Connect Motor Wires

Connect the Motor cables to MOTOR1 and MOTOR2 (MAIN) onto the EGA board. MOTOR2 should be the arm closest to the control box and MOTOR1 should be the slave arm furthest away from the control box.

Ensure no motor wires are visible once screwed into the terminals to prevent any short circuiting from them touching.

Note: In the conduit, you should also have 1 wire to the transformer. If a hard wired push button or keypad is to be connected, this wire should also be available



Gate Direction
Pull to open
Blue (left) - Red (right)



Gate Direction
Push to open
Red (left) - Blue (right)

Double Electric Wiring

Step 3

Connect the cable from the transformer

Connect the 2 cables from the transformer **DIRECT** to the EGA control board terminal AC12-16V (located top right hand corner of control board, this connector block can be removed to wire cables in) as shown in the photo below and turn on at the power point.

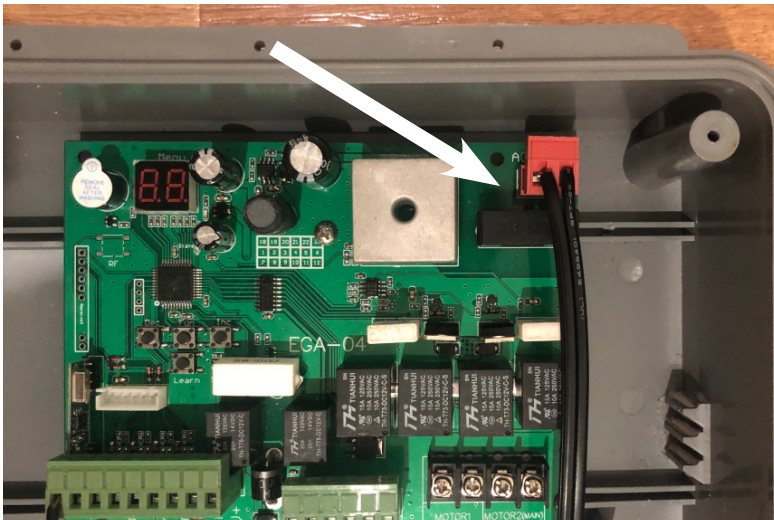
Transformer is not polarity sensitive.

Caution:

WARRANTY WILL BE VOID if installed incorrectly

DO NOT connect 240volts direct to the gate opener

DO NOT hardwire the transformer to 240volt, it must plug into a 240volt power point



IMPORTANT:

At this point with your actuator arms connected and the transformer powering the control board, your next step will be running the “Auto Travel Function” which you will find details on in your main Installation & User Manual on page 36

SCAN ME - to watch
the video ‘teaching the
travel function’



Double Electric Wiring

Step 4 - Optional

Secure the 12v battery if supplied

Place the battery in the control box with the battery Z bracket supplied

Caution: Do not drop the battery



Power up the board with the backup battery

Connect the battery cables from the EGA control board to the 12v backup battery.

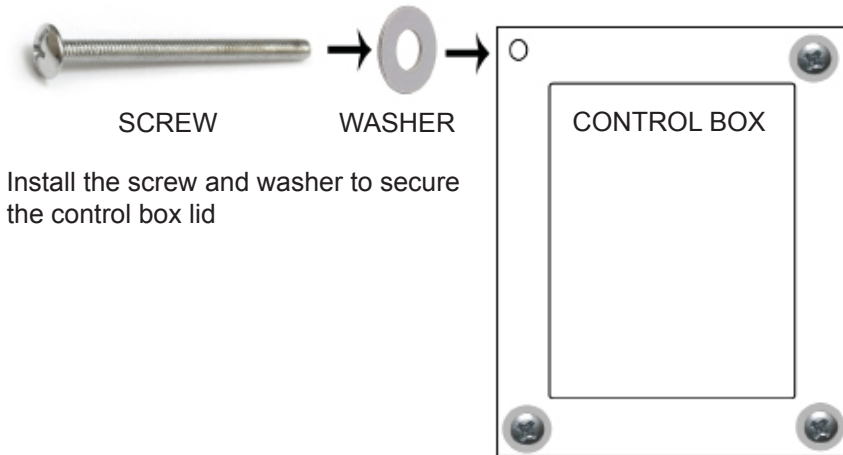
Ensure that the red cable is connected to the red terminal and the black cable to the black terminal

Caution: Observe Polarity. Wrongly installed polarity will damage the board



Double Electric Wiring

Attaching your control box lid using the screws provided



Install the screw and washer to secure the control box lid

Check that the autogate system is operational before closing up the control box.

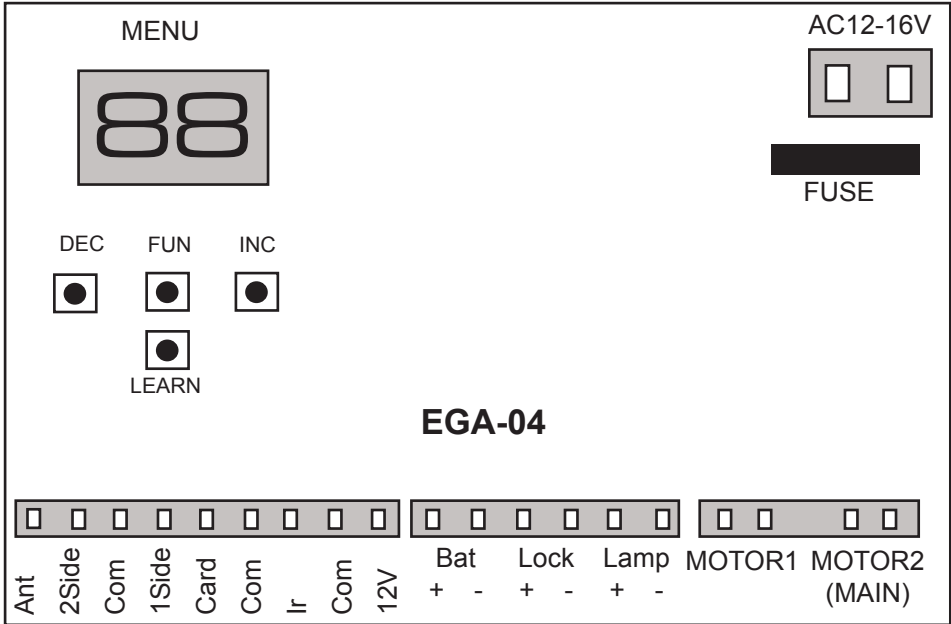
Auto close will not be active.

Please see main user manual and set auto close after installation is complete.

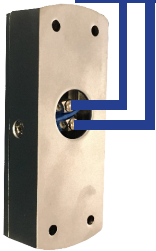
Recommendations & notes:

1. Ensure that the mounting points on the control box are properly sealed to prevent water and insects from getting in.
3. Silicone off the conduit hole to prevent insects from getting into the control box via the wire conduits.
4. For solar we highly recommend to charge your battery every 6 - 12 months for 2 hours only on a 12v battery charger to prolong the life of your battery.
5. Additional accessories connected to BMG's swing motors may reduce the batteries performance e.g battery life and/or battery standby capacity during unfavourable conditions.
6. We recommend every 6-12 months to do a thorough check over the complete unit and it's internals to make sure there is no insect infestation and that everything is still in good working order.

WIRING FOR STANDARD PUSH BUTTON



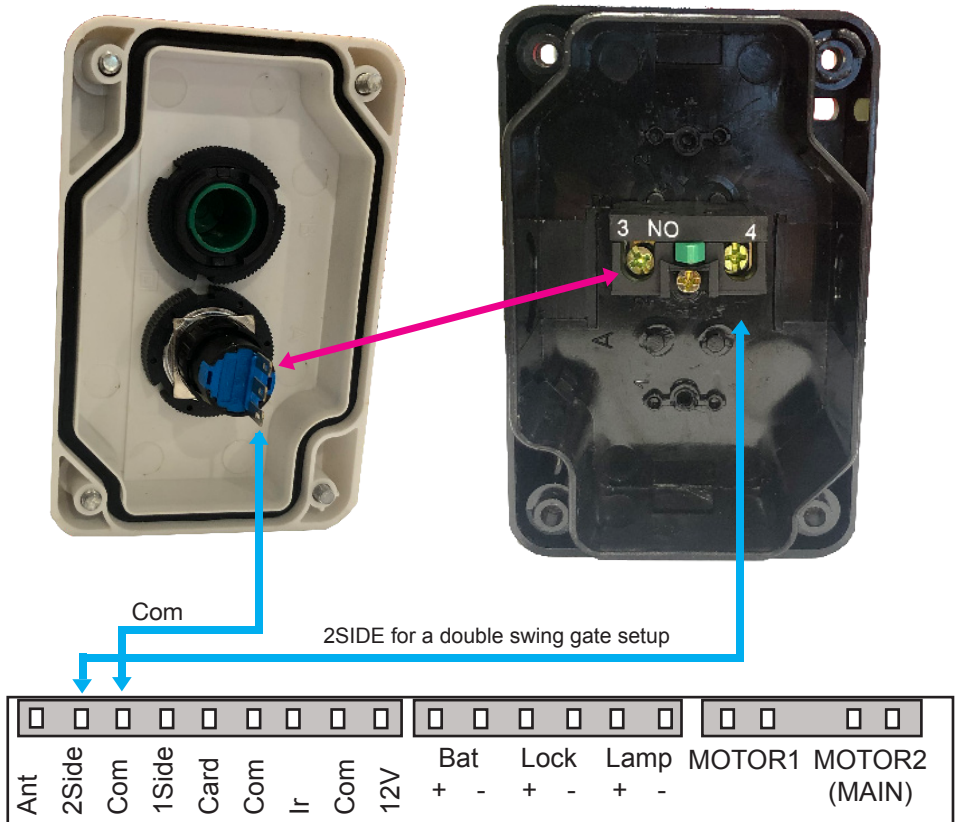
2SIDE for a double swing gate setup



DRY CONTACT

Tip: Green connector blocks on the main control board can be removed to help with wiring in cables

WIRING FOR KEY PUSH BUTTON



Please note that the coloured cables in our above images are for examples only and may not match the coloured cables that you will be using.

When wiring up the push button, you will be able to use the key to lock and disable the button. Follow both coloured wiring instructions (pink and blue) as above.

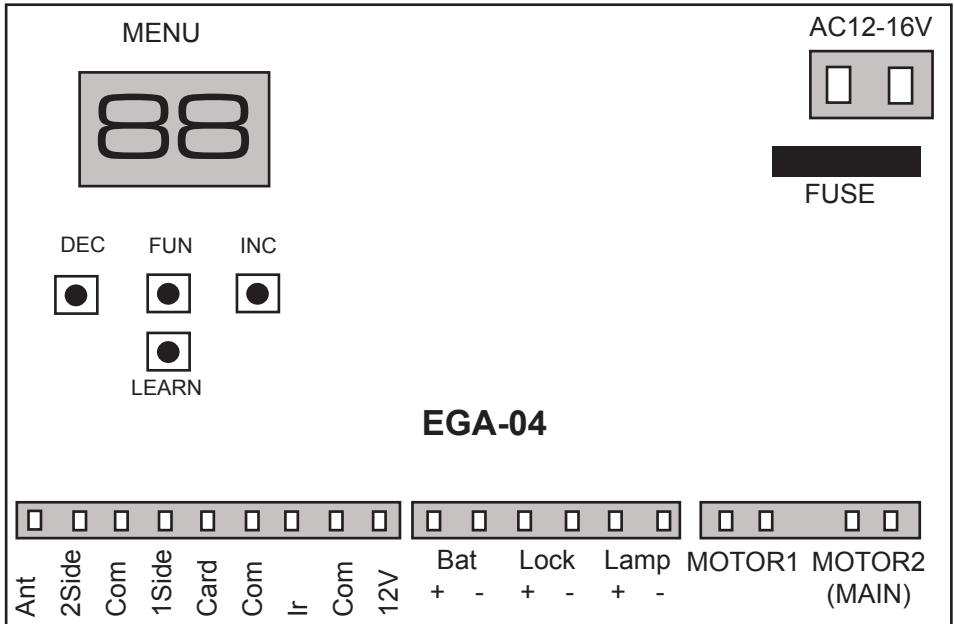
When securing the blue and pink cable to the internal pins of the lock you can either secure by soldering the cable, threading cable through the hole to secure it or secure cable with a connector.

When you attach the push button unit to your post, even though the button housing is a sealed unit, we highly recommend sealing (silicone) all the way around the back housing to prevent any water or insects entering in through your screws. Also when you drill the hole for your cabling we recommend to silicone up that entry point.

We recommend every 6-12 months to do a thorough check over the push button and it's internals to make sure there is no insect infestation and that everything is still in good working order.

Tip: Green connector blocks on the main control board can be removed to help with wiring in cables

WIRING FOR 7 CHANNEL LONG RANGE RECEIVER



2SIDE for a double swing gate setup



LONG RANGE 7 CHANNEL RECEIVER



Tip: Green connector blocks on the main swing control board can be removed to help with wiring in cables